



God came near to us as a child.

Christmas derives from the English "Christ mass," or "Christ's Mass". It comes from the custom of attending Mass to celebrate the birth of Christ.

The Mass commemorates the Last Supper at which Christ presented the bread and wine as his body (his Eucharist) and blood (his blood). It commemorates God's humbling himself to become a man and offering everything on the cross for us.

"I am with you always, to the end of the world" (Matthew 28:20).

Jesus resurrected and became the life to be with us.

You have freedom of Faith. However, as a mission school, the habit of praying according to one's heart is a mission. It is important for human beings to seek the right path in life with an open heart. One day we will find the right path.

The streets are filled with Christmas songs, festive trees are decorated, and the rush of the end of the year seems far from tranquility, but I ask everyone to keep in mind that Christmas is a day of "stillness" this year, and to listen to the voice of God, which can only be heard in that stillness. What is truly important will be heard in the silence.

With thanksgiving for the past year, "Happy Nativity of the Lord!"

*D. Tagawa S.M.*

**Verse for January**

"While you have the light, believe in the light, so that you may become sons of light." (JOHN 12:36)

**Hymn for January**

"I Am Standing in Front of the Door" No. 411 Catholic Hymn Book

**Motto for January**

"Live your life having an aim for the New Year."

"Let's give thanks for everything."

**Safety Reminder for January**

"Let's not run in the corridor."

**Red Feather Fundraising Donation**

We are thankful for the cooperation of our students and parents for this year's fund drive and we are able to collect a cash amount of 5,912yen. The raised fund was donated and forwarded to the Kisarazu City Branch office.

領 収 証  
 平成 5 年 11 月 24 日  
 暁星国際小学校 様  
 千葉県共同募金会 本町支部 支分会  
 支分会長 渡 辺 芳 邦  
 金額 ¥5,912  
 但し 平成 5 年度 赤い羽根共同募金  
 として有難く頂戴致しました  
 227

## Class Visit & 2023 Marathon

Thank you for visiting our school for the class visit and marathon. All participants were able to reach the finish line. The names of the winners up to 6<sup>th</sup> place are posted on the bulletin board in the school. Medals for the awards will be given at a later date.

The school marathon distances were 1.5 km for 1<sup>st</sup> and 2<sup>nd</sup> grade, 1.8km for 3<sup>rd</sup> and 4<sup>th</sup> grade, and 2.0km for 5<sup>th</sup> and 6<sup>th</sup> grade.

|                    | 1 <sup>st</sup> Place | 2 <sup>nd</sup> Place | 3 <sup>rd</sup> Place | 4 <sup>th</sup> Place | 5 <sup>th</sup> Place | 6 <sup>th</sup> Place |
|--------------------|-----------------------|-----------------------|-----------------------|-----------------------|-----------------------|-----------------------|
| Grade 1&2<br>Boys  | 2B                    | 2A                    | 2A                    | 1B                    | 2B                    | 2B                    |
| Grade 1&2<br>Girls | 2A                    | 2A                    | 2A                    | 1B                    | 2B                    | 1A                    |
| Grade 3&4<br>Boys  | 4B                    | 4B                    | 4A                    | 3B                    | 4A                    | 4A                    |
| Grade 3&4<br>Girls | 4B                    | 4A                    | 3A                    | 4B                    | 4B                    | 4B                    |
| Grade 5&6<br>Boys  | 6A                    | 6B                    | 6A                    | 6B                    | 6A                    | 6B                    |
| Grade 5&6<br>Girls | 6A                    | 6A                    | 6A                    | 6A                    | 6A i                  | 5B                    |

## School Holidays during Winter Vacation

During the vacations, phone hours are weekdays from 9:00 to 15:00 and Saturdays from 9:00 to 12:00. December 24<sup>th</sup> (Sunday) and December 25<sup>th</sup> (Monday) are holidays to be observed other than the Lord's Day, the elementary school will be closed. Maria Boutique will be open weekdays from 9:00 to 15:00. In addition, the entire school will be closed for winter holidays from December 29<sup>th</sup> (Friday) to January 3 (Wednesday). Please contact us on days other than those aforementioned.

## School Supplies

Please rewrite any school supplies brought back during the winter break that have faded notations.

Locker tool boxes and blue cases in drawers will not be brought back at the end of the second semester. Please note that the school will purchase these items if they are broken and needed to be reordered.

Please replenish the glue, scissors, cellophane tape, colored pencils, paints, etc. as needed for each grade level.

We have received many unmarked lost and found items. Please be sure to label berets, red and white hats, sweaters, vests, water bottles, and school shoes.

## Issuance of School Certificate

Any school documents or certificates will not be issued between December 24<sup>th</sup> (Saturday) and January 5<sup>th</sup> (Friday). If possible, please apply in advance.

## Calligraphy Works

It has been decided that our school will not participate in the 76<sup>th</sup> Primary, Junior, and High School Chiba Prefecture Calligraphy contest. Students are requested to participate in a contest sponsored by a private company.



## English Test

On January 13<sup>th</sup> (Saturday) Eiken will be held. Notifications of the test result and the admission ticket to the second test will be mailed to your home on February 13<sup>th</sup> (Tuesday). The second test will be held on February 25<sup>th</sup> (Sunday) for level 3, level pre-2, and level 2. Please consult your application forms for test locations. On February 18<sup>th</sup> (Sunday) is the second exam for pre-1 grade level and grade 1 level. Results for the second test are expected to be sent on March 12<sup>th</sup> (Tuesday). In addition, applicants who apply for exemption from the first examination should not take the first examination.

## After School Study and Play

After school study and play for the third term will begin on January 12<sup>th</sup> (Friday). Due to various events, there may be days when after school study and play will be canceled so please consult the school schedule in Akatsuki carefully.

## Achievement Tests

Achievement tests will be held in the third term and the results will be reported with the third term report cards. Testing will be conducted between February 7<sup>th</sup> (Wednesday) and 9<sup>th</sup> (Friday). All A course tests will be supplied by an outside vendor. In B Course, Japanese tests will also be supplied by an outside vendor, but all the other subject tests will be written in-house. Please see below.

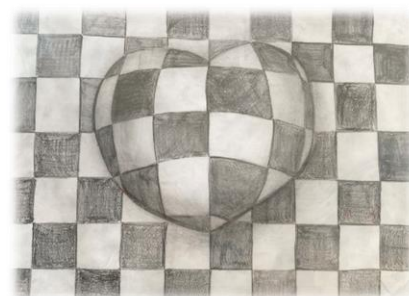
|   | Grades 1 to 4   | Grade 5 & 6                                |
|---|-----------------|--|
| A | Japanese & Math | Japanese • Math • Science • Social studies |
| B | Japanese & Math | Japanese • Math • Science • Social studies |

## The 16<sup>th</sup> Chiba Prefecture Private Primary School Joint Art Exhibition

Ten private elementary schools in Chiba Prefecture will participate in the “Joint Art Exhibition” and display their students’ works. A flyer was distributed today. We hope to see you there. Our school will be on duty at the reception desk from 10:00 to 17:00 on January 18<sup>th</sup> (Thursday).

Exhibit Period: January 14<sup>th</sup> (Sunday) to 23<sup>rd</sup> (Tuesday), 2024 (10 days)

Location: Nikke Colton Plaza, from 10:00 to 17:00



## Chiba Prefecture Private Primary School Fair will be held in Ichikawa City.

A school information session will be held in Ichikawa City, Chiba Prefecture, where private elementary schools in Chiba Prefecture will come together to conduct school information sessions. If you are in the neighborhood, please visit the event with your children.

We hope many people will come to visit us and get interested about our school. We have posters and flyers that can be placed in places where many people will see them, such as where your child practices. (Please let us know if you would like to give them to your children, and please collect them after the event date.)

Place: Ito Memorial Hall, Showa Gakuin

Date: February 25<sup>th</sup> (Sunday), 2024

Time: 9:40 – 13:40

Staff: Mr. Maruyama, Mr. Sasaki, Ms. Horie



## Requests when coming to the school

The bus rotary is closed to general vehicles. Please do not enter the bus rotary or park near the entrance as school buses will not be able to enter and you will be stranded. Please return home as soon as possible after meeting your children in the parking lot. It is very dangerous for children to stay and play in the parking lot.

The staff service entrance may be used only when moving to the gymnasium for class or in special situations such as illness or injury. Parents are also requested not to use the staff service entrance. Please use the main entrance and inform a staff member of your visit to the school.

| Schedule for January   |   | Departure Time                   | After School Study/Play |
|--|---|----------------------------------|-------------------------|
| <b>Winter Vacation until January 5<sup>th</sup> (Friday)</b> |   |                                  |                         |
| 6(Sat.)  | 3 <sup>rd</sup> term Opening Ceremony   | Regular class schedule:<br>13:55 | —                       |
| 7(Sun)   |   |                                  |                         |
| 8(Mon)   | Coming of Age Holiday   |                                  |                         |
| 9(Tue)   | 3 <sup>rd</sup> Disaster/Emergency Drill<br>Start of Borrowing Books from the Library   | 14:45                            | —                       |
| 10(Wed)  | Committee for Grade 5 and up<br>School Bus Group Meetings   | 15:35                            | —                       |
| 11(Thurs)  |   | 14:45                            | —                       |
| 12(Fri)  | Start of After School Study and Play  | 14:45                            | ○                       |
| 13(Sat)  | English Proficiency Test/Eiken③   | 13:55                            | —                       |
| 14(Sun)  |   |                                  |                         |
| 15(Mon)  | P.C. for A Course   | 14:45                            | —                       |
| 16(Tue)  |   | 14:45                            | ○                       |
| 17(Wed)  | Club Activities for Grade 4 and up  | 15:35                            | —                       |
| 18(Thurs)  |   | 14:45                            | ○                       |
| 19(Fri)  |   | 14:45                            | ○                       |
| 20(Sat)  | Kanji Proficiency Test/Kanken②  | 13:55                            | —                       |
| 21(Sun)  |   |                                  |                         |
| 22(Mon)  | P.C. for B Course   | 14:45                            | —                       |
| 23(Tue)  |   | 14:45                            | ○                       |
| 24(Wed)  | Committee for Grade 5 and up  | 15:35                            | —                       |
| 25(Thurs)  |   | 14:45                            | ○                       |
| 26(Fri)  |   | 14:45                            | ○                       |
| 27(Sat)  | Math Proficiency Test/Suken   | 13:55                            | —                       |
| 28(Sun)  |   |                                  |                         |
| 29(Mon)  | P.C. for A Course   | 14:45                            | —                       |
| 30(Tue)  |   | 14:45                            | ○                       |
| 31(Wed)  | Club Activities for Grade 4 and up  | 15:35                            | —                       |
| Note   | ※3 <sup>rd</sup> term after school play and study begins from the 12 <sup>th</sup> . In some cases, they may be cancelled due to the implementation of other events<br>※The spelling bee contest scheduled for February will not be held. |                                  |                         |